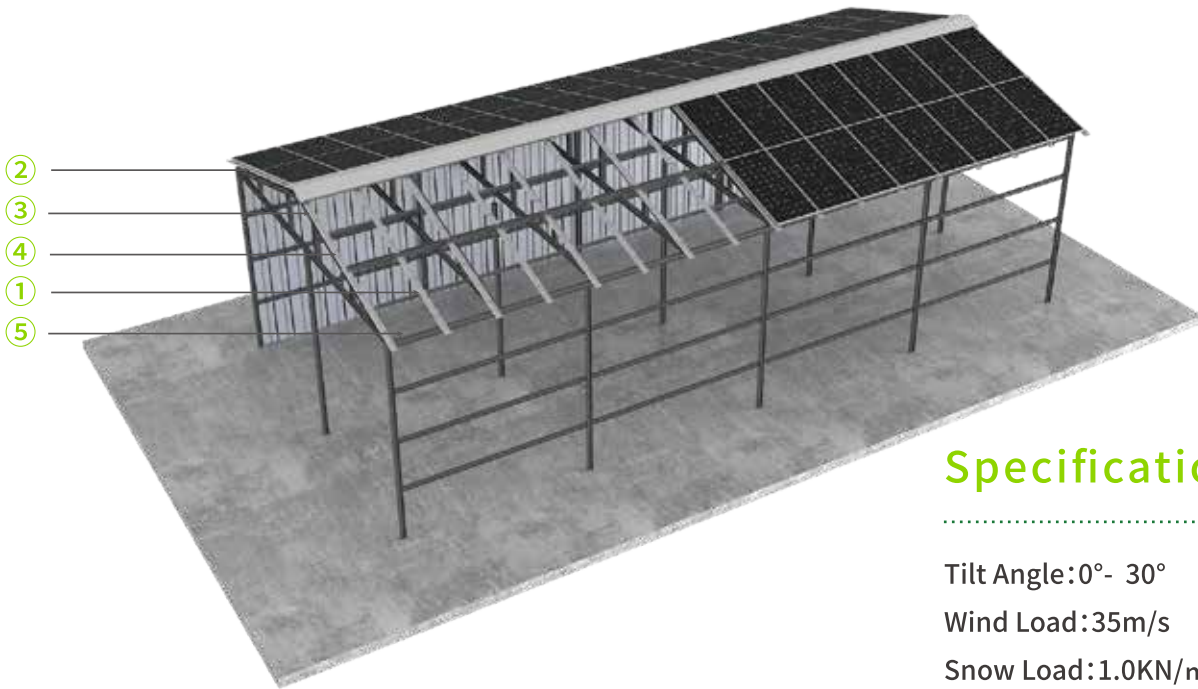


3.1 BIPV Roof Mount



Specification

Tilt Angle: 0°- 30°

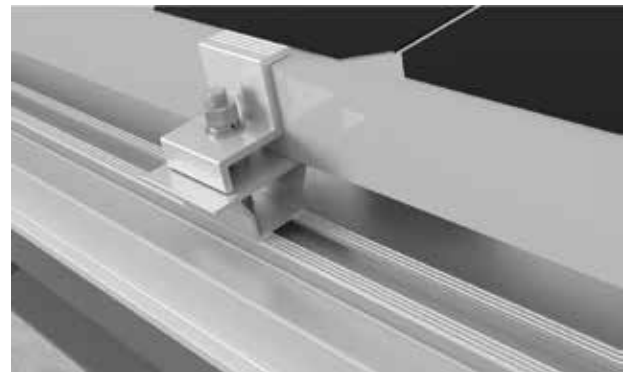
Wind Load: 35m/s

Snow Load: 1.0KN/m²

Material: AL6005-T5/SUS304

Feature

1. Equipped with drainage tray to avoid water leakage effectively.
2. Water-proof rails can be installed easily and increase the structure strength.
3. Lower down indoor temperature during summer.
4. Light transmittance for good indoor day-lighting.
Fine-looking rooftop appearance.



Component



① XP-BR-01



② XP-EC-35-FX



③ XP-FSGD-01



④ XP-MC-35-FX



⑤ XP-R71