

2.1 Zn-Al-Mg Ground Mount System

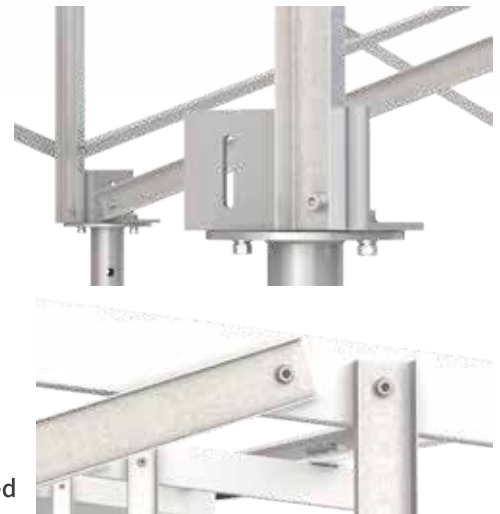


Specification

Tilt Angle: 0° - 30° Wind Load: 60m/s
Snow Load: 1.4KN/m² Material: Zn-Al-Mg steel, SUS304

Feature

1. Stronger corrosion resistance to lower down the maintenance cost.
2. Cost effective than hot-dip galvanized steel structures.
3. Pre-assembled before shipment for easy installation on site.
4. Better corrosion & wear resistance and self-repairing features, no need regular maintenance after installation.



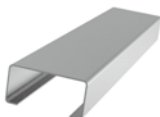
Component



①. XP-C60-1.2



②. XP-C60-1.2



③. XP-NJB-C60-1.0



④. XP-L-B01



⑤. XP-MC-XLM-C



⑥. XP-EC-35-XLM-C