

User's Manual



Model: KR-XS55DZ

Please read this manual carefully before operation/please properly keep it.

Self-propelled Floor Scrubber

All models are enclosed with this manual. This manual provides necessary instructions for machine operation and maintenance.

Please read and understand this manual carefully before operating or using this machine.

Each new model is also enclosed with a complete parts manual, which shall be used when replacing the parts. In order to ensure timely delivery, please follow the instructions of "Parts Ordering Method" in the parts manual.

This machine can provide efficient service. Following these instructions, the machine can achieve the best results at the lowest cost:

- **The model is taken as an example in this manual.**
- Operate the machine carefully.
- Maintain the machine regularly according to the maintenance instructions provided in the operation manual.
- Use parts manufactured by the original factory or of the same grade for maintenance.

Parts and supplies can be ordered online, by telephone, fax or e-mail.

Environmental protection

Please discard the packaging materials, old machine components such as batteries, antifreeze, oil and other toxic liquids under the premise of maintaining environmental safety according to your local waste disposal regulations.

Please do a good job in recycling.

Machine data

Please complete for future reference.

Model number- _____

Machine serial number- _____

Machine option- _____

Sales representative- _____

Sales representative's Tel- _____

Customer number- _____

Installation date- _____

Table of Content

Safety precautions

Security label

Machine components

Machine installation

Unpack the machine.

Install the battery.

Set the external power supply.

Machine operation mode

Brush and scouring pad information

Machine installation

Connect the suction rake assembly

Install the brush/scouring pad

Inject solution into the clean water tank

Machine operation

Pre-operation inspection

At machine startup

During machine operation

Battery meter

Overload circuit breaker

Timer

Water tank drainage

Sewage drainage tank

Clean water drainage tank

Battery charging

Battery charger specifications

Use of battery charger

Installation and use of battery

LED light indicating working status

Machine maintenance

Daily maintenance

Weekly maintenance

Suction rake strip replacement

Suction rake strip adjustment

Machine handling

Machine storage

Trouble shooting

Power charger fault code

Specification

Machine dimensions

General machine dimensions/ capacity

Type

Warranty Card

Secondary Warranty Card

Safety precautions

This machine is a commercial product. It is specially used for cleaning indoor hard floor and must not be used for other purposes. Please be sure to use the recommended scouring pad, brush and neutral detergent suitable for this machine.

The following safety warnings and the heading "For Safety Consideration" are used throughout this manual and, according to their descriptions, their functions are:

Warning: warn of serious personal injury or death risks or unsafe operations.

For Safety Consideration: matters that must be observed when using the machine safely.

The following safety precautions indicate situations that may cause potential hazards to the operators or equipment. All operators must read, understand and follow the following safety precautions.

Warning: fire or explosion hazard.

- Do not use flammable liquids; Do not operate the machine near or in places with flammable liquids, gases or flammable dust.

This machine is not equipped with an explosion-proof motor. During start-up and operation, the electric motor of this machine will generate sparks. If this machine is used in places with flammable gases, liquids or flammable dust, it may cause flash fire or explosion.

- Do not pick up flammable materials or reactive metals.

Warning: danger of electric shock.

- Disconnect the battery wiring and charger plug before repairing the machine.

- Do not use a damaged power cord to charge the battery. Do not modify the plug.

- If the charger's power cord is damaged or broken, it must be replaced by the manufacturer or its maintenance agent or similar qualified personnel with qualification so as to avoid dangers.

Warning: The rotating brush is running. Keep your hands away. Please turn off the power before repairing the machine.

For Safety Consideration:

Do not operate the machine in the following cases:

- Contact with flammable liquids or close to flammable gases, otherwise it may cause explosion or flash fire.

- Unless trained and authorized.

- Unless the operation manual is read and understood.

- Do not have normal operating conditions.

2. Before starting the machine:

- Ensure all safety devices are in place and operating normally.

3.

When using the machine:

- Please walk slowly in case of slopes or slippery surfaces.

- Wear non-slip shoes.
- Please slow down when turning.
- Report immediately when the machine is damaged or the operation fails.
- Do not allow children to play on or near the machine.
- Observe the mixing ratios and handling instructions on the chemical containers.
- Do not operate on slopes with a gradient exceeding 5% (3°).

4.

Before leaving or repairing the machine:

- Park the machine on a smooth floor.
- Turn off the machine.
- Take out the key.

5.

When repairing the machine:

- Do not move parts. Do not wear loose tops, shirts or sleeves.
- Disconnect the battery wiring before operating the machine.
- Wear protective gloves and eye protection equipment when handling the battery or battery wiring.
- Do not flush the machine with high pressure spray or water pipes. That may lead to electrical system failure.
- Use replacing parts provided or approved by the manufacturer.
- All maintenance operations must be done by qualified maintenance personnel.
- Do not modify the original design of the machine.

6.

When using trucks or trailers for carrying machines:

- Drain the water tank before shipment.
- Use the recommended loading/unloading dock ground when loading and unloading machines from trucks or trailers.
- Remove the battery before handling the machine.
- Please carry the machine with the assistance of others.
- Turn off the machine.
- Lower the brush disc motor to the lowered position.
- Secure the machine with ropes.

Security labels

The safety labels will be marked on the machine according to the indicated positions. If a label is missing, damaged or difficult to identify, please replace that label.

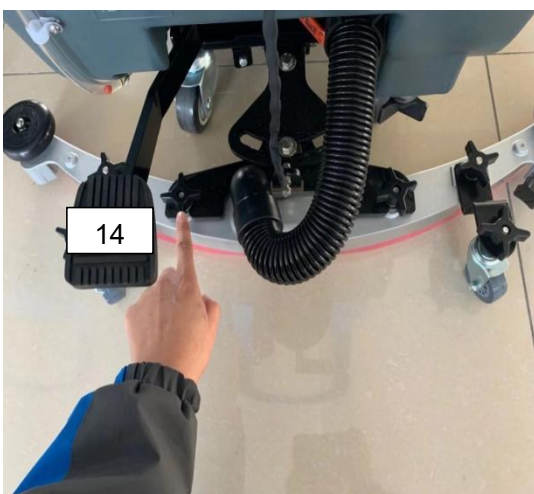
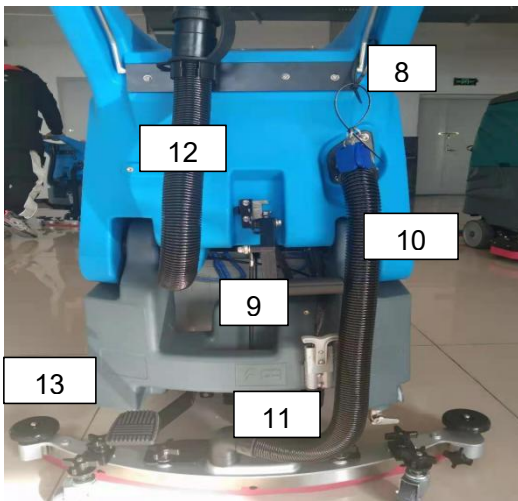
Warning: The label is in the sewage tank cover.



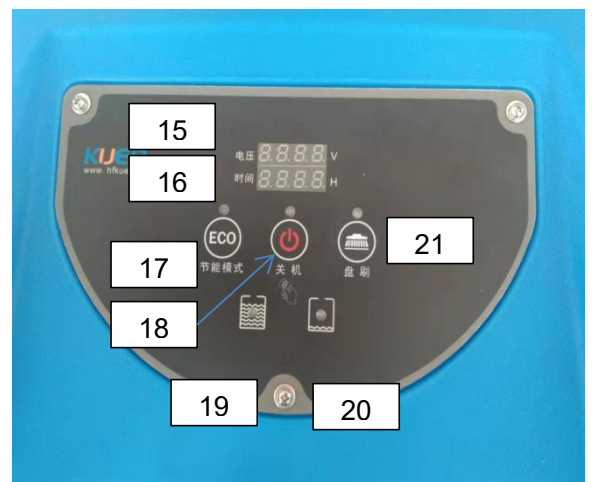
The rotating brush label is on the brush head.

Warning: The rotating brush is running.

Keep your hands away. Please turn off the power before repairing the machine.



- 1、 Sewage tank cover
- 2、 Sewage tanks
- 3、 Water intakes
- 4、 Clear water tank
- 5、 Scrubbing Plate
- 6、 Switch
- 7、 Main wheel
- 8、 Brush handle
- 9、 Suction pick handle
- 10、 Suction pipe
- 11、 Charging port
- 12、 Sewage pipe
- 13、 Suction pick-up components
- 14、 Pedal
- 15、 Voltage display
- 16、 Working hours
- 17、 Energy saving mode
- 18、 Power switch
- 19、 Sewage filled with red light
- 20、 Water shortage shows
- 21、 Brush the work button



Machine installation

Unpack the machine

1. Carefully check whether there is any damage on the packing box of the machine. Please report any damage to the carrier immediately.
2. Check the list of freight contents. If there are any missing items, please contact the distributors.

Freight contents:

- 2- 12V Battery-Optional
 - 220V, 15A Intelligent charger
 - ϕ 10 wires, 30cm long battery connection
 - 4 plastic sleeves for battery connection
 - One Suction rake assembly
 - One brush disc and one needle holder
 - Scouring pad must be purchased separately.
3. Before unpacking the machine, please remove the iron sheet fixing parts on the big casters. Carefully remove the machine from the shelf with the help of others.

Note: If no loading/unloading ground is not used, do not directly push the machine so as to avoid damage to the machine.

Installation of battery

For Safety Consideration: when repairing the machine, please wear protective gloves and eye protection equipment when handling the battery and battery wiring.

Recommended battery specifications:

Two 12V, 100Ah maintenance-free batteries

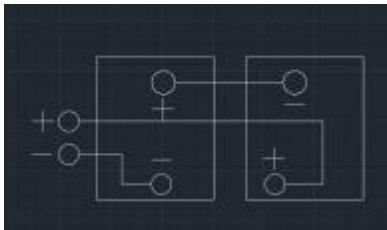
Two 12V, 110Ah maintenance-free batteries

Maximum volume of battery: 330 mm x 171 mm x 216 mm

1. Park the machine on the horizontal ground, turn off all power switches, and take out the key.
2. Lift the sewage tank so that you can reach the battery compartment. (Figure 1)



3. Carefully install the battery in the battery compartment and arrange the battery terminals as shown in the following figure (Figure 2)
4. Connect the battery wires to the battery terminals as shown in the figure (Figure 2)
Red is connected to the positive (+) and black to the negative (-).



Working mode of machine

Cleaning method:

Water and detergent flow to the brush disc and the ground through water valves and solenoid valves. Clean the floor with detergent and water by rotating the brush disc. For the sewage produced, when the machine goes forward, the sewage on the floor will be sucked into the sewage tank through the suction rake assembly and the suction motor.

Brush and scouring pad information

In order to ensure the best efficiency, please use a brush of the appropriate type when cleaning.

The recommended brushes and scouring pads are as follows:

Needle holder: 550mm 21" needle holder

Brush disc: 550mm 21" floor brush

Polishing pad (white) - used for maintaining a highly slippery or polished floor; water the floor first, then clean, so as to prevent the floor from being scratched.

Cushion pad (red) - used for cleaning off slight dirt without damaging the floor.

Scrubbing pad (blue) - used for scrubbing off moderate to severe dirt. Wipe off dirt, stains and grinding marks to clean the floor surface for recoating.

Folding pad (brown) - used for removing the coating from the ground surface for recoating.

Gravity folding pad (black) - used for removing heavy coating or substrate or scrubbing with strong force.

Machine installation

Connect the suction rake assembly

1. Park the machine on the horizontal ground, turn off all power switches and take out the key.
2. Pull up the lifting rod of the suction rake to the upper position (Figure 3).



3. Mount the suction rake onto the suction rake mounting bracket, as shown in the figure (Figure 4). Be sure to fully place the fastening knob in the slot and then tighten the knob.



4. Connect the suction pipe to the suction rake assembly, as shown in the figure (Figure 5).



5. Check the suction rake strip and make appropriate adjustment (see "Suction Rake Strip Adjustment")

Brush disc installation

For Safety Consideration: before installing the brush disc or needle holder, please place the machine on the horizontal floor and turn off

all power switches and take out the key.

1. Park the machine on the horizontal ground, turn off all power, and take out the key.
2. Press down the brush disc lifting pedal and move it to the right (as shown by the arrow) so as to raise the brush disc motor (Fig. 6)



(Fig. 6)

3. Place the needle holder/brush disc in the middle of the brush disc cover (as shown in Fig. 7)



4. Press the button of switch of the brush disc motor, press down the pedal of the brush disc motor and move it to the left (as shown by arrow), so as to complete the installation of the brush disc and needle holder (as shown in Fig. 8).



5. Open the host power supply (as shown) , press the work of the brush disc icon



6. Hold the round steel handle, automatic suction pick-up began to wash the work (as shown)



Injection of solution into the clean water tank

The front of the machine is provided with a bucket water feed hole to allow injection of solution into the clean water tank (Fig. 9)



For the floor washing: use hot water (up to 60C).

According to the mixing ratio instructions on the container, pour the

recommended detergent into the clean water tank for mixing.

Note: If use a bucket to feed the solution into the clean water tank, make sure the bucket is clean. Do not use the same bucket to feed solution and discharge sewage.

Note: For cleaning method, please always use the recommended commercial detergent. If the machine is damaged due to improper use of detergent (remember not to use granular detergent, such as washing powder), the manufacturer will not be responsible for warranty.

Warning: Pay attention to the danger of fire or explosion hazard. Do not use

flammable liquids. For Safety Consideration: please observe the mixing ratio and handling instructions on the chemical container when using the machine.

Machine operation

For Safety Consideration: Do not operate the machine until you have read and understood the operation manual.

Warning: fire or explosion hazard. Never operate the machine near or in a location with flammable liquids, gases, or flammable dust.

Pre-operation check

- Clean up the dust on the floor.
- Check the scale of the battery meter (refer to "Battery Meter").
- Check the wear of the scouring pad/brush.
- Check the wear of the suction rake strip and adjust the angle appropriately.
- Ensure that the sewage tank is empty and the sewage filter screen is installed and clean.

During operation of the machine

To stop cleaning, please turn off the brush disc, the suction rake motor switch and the main power supply so as to raise the brush disc and suction rake.

During operation of the machine

Warning: Do not pick up flammable materials or reactive metals so as to avoid fire or explosion. For Safety Consideration: please walk slowly and wear non-slip shoes in case of slopes and sliding surfaces.

1. The cleaning paths shall overlap each other by 5cm.
2. Keep the machine moving so as not to damage the floor.
3. Clean the cleaning area in advance to avoid dragging marks. If there is a scratch on the floor following the moving suction rake, please wipe the strip with a cloth and remove the garbage.
4. Do not operate the machine on slopes with a gradient of more than 5% (3°).
5. If there is too much foam, please pour the recommended commercial defoamer into the sewage tank.

Note: Do not allow foam to enter the sewage filter screen in the sewage tank so as to avoid damaging the suction motor.

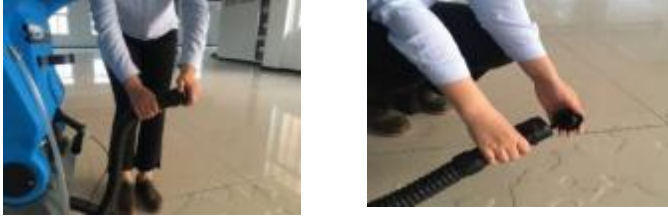
6. For extremely dirty areas, double cleaning is recommended. First raise the suction rake for cleaning; after soaking in the solution for 3 - 5 minutes, lower the suction rake and clean it again.
7. When staff leaves the machine, please raise the suction rake and the brush disc, turn off all power switches and remove the key.

Timer/battery meter the battery meter shows the battery charge. When the battery is fully charged, all indicators are on. With the power consumption, the indicator lights will be from right to left in turn off (figure 13) . Note: In order to extend the life of battery, please be sure to charge the battery in time after the use of the machine. When voltage reaches last 21V, please stop cleaning. This prevents the battery from running out completely. Please push the machine to the charging area immediately to charge the battery.



Drain the sewage tank

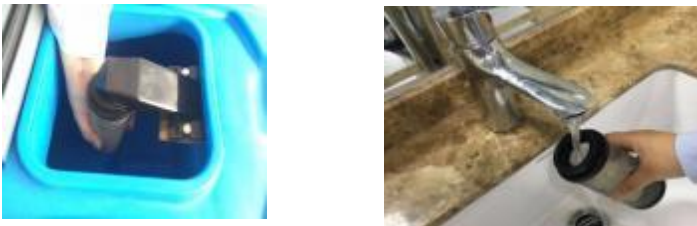
1. Move the machine to the drainage location and turn off the power key.
2. Hold the drain pipe with its mouth up, remove the pipe cover and then lower the pipe for drainage (Fig. 15- 1).



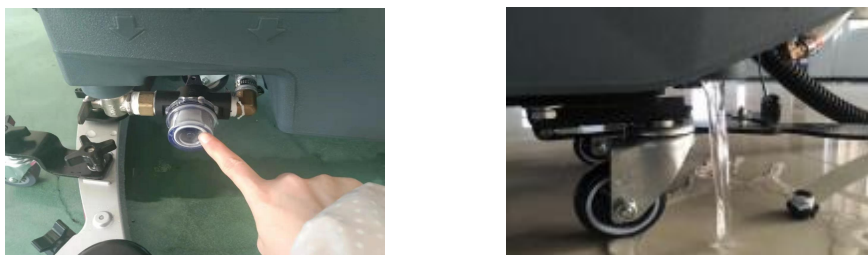
(Fig. 15- 1)

Note: Do not use the same bucket to feed solution into the clean water tank when that bucket is used for receiving the sewage discharged from the sewage tank.

3. Remove and flush the sewage filter screen located in the sewage tank (Figure 15-2)

**Drain the clean water tank**

To drain the remaining water from the clean water tank, open the drain pipe cover of the clean water tank (Fig. 16).

**Battery charging**

The following charging instructions apply to the charger supplied together with this machine.

Note: In order to prolong the service life of the battery, please be sure to charge it in time after use of the machine so as to prevent the battery from being damaged due to long-term power loss.

Battery charger specifications

- Charger type: fully automatic intelligent charger
- Maintenance-free battery
- Output voltage- — 24V

- Output current— 15A

Use of battery charger

For operating instructions of the battery charger, please refer to the battery charger manual provided together with the charger.

Move the machine to a well-ventilated place.

Warning: Pay attention to fire or explosion hazard. For safe use, please stay away from sparks or open fire sources.

2. Park the machine on a flat and dry floor, raise the suction rake and brush disc, turn off all power switches and remove the key.
3. Insert the AC power cord of the electrical appliance into a well-grounded power socket.
4. Insert the DC line of the charger into the battery charging socket at the rear of the machine (Fig. 17).

Note: Once the battery charger is connected, the machine will not work any more.



Note: Please do not unplug the DC line of the charger from the socket on the machine during charging. This is to avoid arc discharge. If charging must be suspended during the charging process, unplug the AC power cord first.

Precautions for installation and use of battery

1. Before using the battery, check whether each battery is damaged, clean and marked clearly, and clean the battery surface with dry cloth; Check the open-circuit voltage of the battery, whether the positive and negative poles are clearly marked, and whether there is any reversal.
2. The battery shall be installed upright according to the requirements of the drawings and shall not be inverted. The spacing between adjacent batteries shall be at least more than 5 mm. After the installation is completed, check whether the positive and negative poles of each battery are correct according to the requirements of the installation drawings, and then connect each battery as a whole group with wires.
3. After the battery is completely installed, check whether the connecting parts are loose. When tightening the connecting parts, remember not to use too much force which may damage the pole. Generally, the tightening force is not more than $15\text{N} \cdot \text{m}$.
4. When installing the batteries as a whole, adjust the pads between the batteries to make the batteries upright, and tighten the batteries to prevent them from shaking and colliding.
5. Electric door locks, safety seats and other devices where sparks are easily to be produced must be isolated from the battery.

6. The batteries will leave factory in state-of-charge. Usually, the user can directly load the battery for use. For example, if the battery is left idle for a long time (more than 2 months), it shall be charged according to the charging method before use.
7. The battery shall not be close to fire sources or heat sources. Direct exposure in the sunlight is strictly prohibited in hot summer. Severe vibration, collision and short circuit of positive and negative poles of the battery shall be avoided.
8. The battery capacity is subject to an ambient temperature of 25C. For every 1C drop in temperature, the battery capacity will drop by about 1%. The influence factors of temperature shall be taken into account in use, and the use under - 10C environment shall be avoided insofar as possible.
9. Batteries shall not be disassembled without authorization so as to avoid danger.
10. Waste batteries must be recycled and must not discarded at will, which may affect the environment.
11. Pay attention to the battery temperature changes during charging so as to prevent overheating from damaging the battery and causing danger.
12. The machine is strictly prohibited in use with the battery of a long-time power loss. It must be fully charged at one time before use.
13. Always remember not to charge the machine frequently or let the machine work under the condition of frequent power loss, which is easy to damage the battery. The manufacturer is not responsible for the battery damage so caused.

Working status of LED indicator of intelligent charger

LED lamp	Indication status	Working state
LED1.LED2	Twinkling, fan not turning	Pre-charging status [charging time: 3 hours]
LED1LED2	Red light on, fan turning	Constant current status [charging time: 7-8 hours]
LED1.LED2	Red light on, fan turning	Constant voltage status [charging time: 4.5 hours]
LED1.LED2	LED1 red light on, LED2 green light on, fan not turning.	Small constant current status [charging time: 4.5 hours]
LED1.LED2	LED1 light off, LED2 green light on, fan not turning.	Charging completed
Remarks		
Several cases of LED2 red light on	1. Short circuit of load	
	2. The wires are connected reversely	
	3. Short circuit of battery wire	
	4. Overtemperature - LED2 orange light on	

Machine maintenance

In order to keep the machine in the best working condition, daily, weekly and monthly maintenance procedures must be observed.

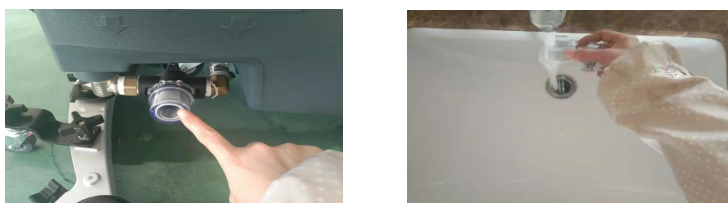
Warning: Pay attention to danger of electric shock. Please disconnect the battery wiring before maintaining the machine.

Daily maintenance (after each use)

Drain and clean the sewage tank (Fig. 18)



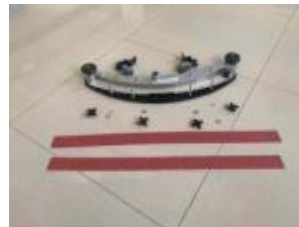
Remove and flush the sewage filter screen located in the sewage tank (Fig. 19).



Drain the clean water tank, remove the clean water filter screen, clean it and then put it back (Fig. 20)



Clean the suction rake strip (Fig. 22). Place the suction rake assembly in the raised position so as to prevent damage to the strip.



1. Check the wear condition of the edges of the suction rake strip (Fig. 23). In case of wear, please change over the two ends of the strip. (Refer to "Replacement of Suction Rake Strip")



2. Wipe the machine with multi-purpose detergent and wet cloth (Fig. 24). For Safety Consideration: when cleaning the machine, do not flush the machine with high-pressure spray or water pipe, which may cause electrical system failure.



In order to prolong the service life of the battery, please be sure to charge the battery in time after use of the machine so as to prevent the battery from being damaged due to power loss (Fig. 25).

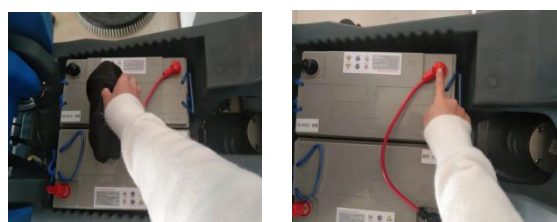


Weekly maintenance

1. Remove the clean water tank under the machine and clean the filter screen (Fig. 26). Make sure to empty the clean water tank before removing the filter screen.



2. Clean the top of the battery to prevent electrode corrosion, and check whether the wire connection is loose (Fig. 27).



3. Check the sewage tank's cover seal for foreign matters or damage (Fig. 28). In case of any damage, please replace it.



Machine handling

When using a truck or trailer to transport the machine, be sure to follow the following banding procedures:

1. Raise the suction rake and brush head.
2. Use the recommended loading/unloading ground for loading the machine.
3. Place the front of the machine close to the front of the truck or trailer. After the machine is stably placed, lower down the brush head and suction rake.
4. Place an obstacle behind each drive wheel to prevent the machine from sliding.
5. Use ropes to fix the top of the machine, thus preventing tilting. Brackets must be installed on the deck of the truck or trailer.

For Safety Consideration: Please use a recommended loading ground to load and unload the machine with a truck or trailer. Use ropes to basically fix the machine on the truck or trailer.

Machine storage

1. Charge the battery before storage of the machine. Do not store the machine with a battery running out. If the storage period is long, please ensure that the battery is charged every 2-3 months so as to prevent long-term power loss and damage.
2. Drain the water from the water tank and rinse it thoroughly.
3. Store the machine in a dry place and keep the suction rake and brush disc in the raised position.
4. Open the sewage cover to facilitate ventilation.

Note: Never expose the machine to rain. Store it indoors.

5. If the machine is stored at a freezing temperature, follow the antifreeze instructions below.

Antifreeze

Pour 1 gallon (4 liter) recreational vehicle (RV) antifreezing agent into the clear water tank without dilution.

For Safety Consideration: Avoid contact between the antifreezing agent and eyes. Wear protective glasses.

Important: Rinse the antifreezing agent in the clean water tank before operating the machine.

Troubleshooting

Problem	Cause	Solution
The machine fails to work.	The switch is not turned on or is damaged.	Use the key to turn on the switch or replace the switch.
	The suction disc motor button is not turned on or is damaged.	Turn on the switch or replace the switch.
	The suction motor button is not turned on or is damaged.	Turn on the switch or replace the switch.
	The battery is dead or damaged.	Please charge or replace the battery.
	The overload reset switch trips off.	Remove short circuit fault and press down the overload reset switch.
The charger does not work.	The plug is not connected to the power supply.	Check the plug connection.
	The positive and negative connection wires are connected incorrectly	Connect the positive and negative poles correctly
	The charger fails.	Refer to charger's fault code.
The brush disc motor does not work.	The brush disc is lifted off the ground or the brush disc motor button is damaged	Replace the microswitch of the brush disc motor.
	The motor switch is damaged	Replace the motor microswitch.
	The overload reset switch trips off.	Troubleshoot, and press down the overload reset switch.
	Wear of motor's carbon brush	Please contact the Service Center.
	The joint of brush disc motor is loose	Fix the joint again.
	The brush disc motor is damaged.	Replace the motor.
The machine cannot move forward.	The steering wheel is damaged.	Replace the steering wheel.
	The large caster is damaged	Replace the big caster
	The adjusting nut of brush disc is loose	Re-adjust the brush disc's adjusting nut.
	The suction motor is damaged.	Replace the suction motor.
	The sewage tank is full.	Discharge the sewage.

Problem	Cause	Solution
Suction is insufficient.	The sewage tank is full or the suction pipe is damaged.	Drain the sewage tank or replace the suction pipe.
	The drain pipe cover is not sealed.	Re-cover the drain pipe cover.
	The sewage filter screen in the sewage tank is blocked.	Clean the sewage filter screen.
	Foreign matters at the seal of the sewage pipe cover.	Remove the foreign matters and re-cover the sewage pipe cover.
	Wear of suction rake strip	Replace or replace the suction rake strip.
	The suction rake strip cannot be bent properly.	Adjust the height of suction rake strip.
	The suction motor is damaged.	Replace the suction motor.
	Foreign matters at the sewage guide cover	Clean off the foreign matters in the sewage guide cover.
The running time is shortened.	The battery level is low.	Charge the battery.
	The battery level is low	Please fully charge the battery
	The battery fails	Replace the battery
	The battery needs maintenance	Refer to the " Battery Maintenance"
	The battery charger fails.	Maintenance or replacement of battery charger

Troubleshooting - continued

Little water or no water is flowing out.	Filter screen of the clean water tank	Clean the filter screen of the clean water tank.
	The water valve switch is broken.	Replace the water valve switch.
	The solenoid valve is broken.	Replace the solenoid valve.

Battery charger fault codes

Code	Fault	Solution
LED2 green light on and blinks	The battery voltage is lower than 22V.	Charge for half an hour at 24V, 15-25AH, and then use the intelligent charger for daily charging.
	The battery level is inverted and cannot reach 22.4V.	
LED2 red light on.	The battery voltage is lower than 22V.	The battery connector is not connected properly; The battery circuit fails.
Remarks	1. The charger of liquid adding type cannot charge maintenance-free batteries, which may easily burn out the charger.	
	2. Maintenance-free chargers can charge the batteries of liquid adding type, but the batteries cannot be fully charged	
	3. If the voltage is lower than 22V, the intelligent charger cannot work.	
	4. If the battery voltage is lower than 23 V, the battery will give a warning for charging. Please charge it in time.	
	5. The above faults are all from new batteries. For old batteries, they need to be maintained and replaced.	
	6. Under normal circumstances, when the battery level is low, the power indicator on the machine operation interface will give a warning. Please charge it in time. If it is not charged for a long time, the above-mentioned faults will occur.	

General machine dimensions/ capacity

Item	Dimensions/ capacity
Model	XSZ55D
Length	1280mm
Height	970mm
Width/ frame	920mm
Width/ rear suction rake (from guide wheel to guide wheel)	780mm
Brush diameter	510-560mm
Brushed path width	510-560mm
Clean water tank capacity	55L
Sewage tank capacity	60L
Weight/No battery	77/85KG
Weight/ Standard battery pack included	142/150KG

Type

Type	Quantity	Voltage	Rated current	Weight (each)
Battery (standard)	2	12V	100Ah 3hr	32.5Kg

Type	Use	VDC	KW (hp)
Drive	Drive motor	24	0.30
Electric motor	Suction disc motor	24	0.55
	Suction motor	24	0.40

Type	VDC	Ampere	Hertz	VAC
Charger (Intelligent type)	24	15	50	220

Product Warranty Certificate (Main Card)

(This warranty card is the main certificate of warranty service, please keep it properly.)

Warranty regulations:

During the warranty period, faults arising from normal use according to the instruction manual will be repaired free of charge. Please send the product to be repaired with this warranty certificate and invoice to the seller for repair free of charge.

Please kindly understand that, in any one of the following cases during the warranty period, the repair shall be a paid repair.

1. The original warranty certificate and valid invoice cannot be provided.
2. Faults or damages are caused by wrong use and improper repair or modification.
3. Failures or damages are caused by transportation, handling or falling after purchase.
4. Failures or damages are caused by using power sources other than those specified (voltage, frequency, etc.) or abnormal voltages.
5. Machine appearance, or accessories such as dust-proof piece, filter element, electric wire, hose and steel pipe, etc.

During the period stipulated in this warranty, repair will be provided free of charge according to the above agreed conditions. The warranty does not extend to other losses caused by the failures.

User's name: _____

Add: _____

Invoice number: _____

Date of purchase: _____

Seller: _____

Address: _____

CONTACT US:**Hefei Kuer Environmental Protection Technology Co. LTD**

Address: No. 11, Cuizhu Road, Taohua Town, Feixi County, Hefei, Anhui Province

Website: <https://www.kuerclean.com>

TEL/Whatsapp: 8617352967132

E-mail: info@kuerclean.com

Product Warranty Certificate (Secondary Card)

1. Product information:

Product model and name: _____

Factory number: _____

User information: _____

End user: _____ Tel: _____

Address: _____ Fax: _____

E-mail: _____

E-mail: _____ Postal code: _____

3. Seller information: _____

Seller's name: (valid with seal)

Add: _____

Contact: _____

Tel: _____

Postal code: _____ Sale date: _____

In order to honor the Company's service commitments and relieve worries of users with excellent service, the Company will establish user information files in the Customer Service Computer System.

1. Please be sure to complete the main card and the secondary card of the warranty certificate as soon as possible, and return the secondary card to the Customer Service Department of the Company for filing within 1 month of the purchase of the machine. The mailing address is as follows:
2. If the main card of the warranty certificate or the voucher of purchase of the machine is lost, you may check the Company's User Information Files for all services available.

CONTACT US:**Hefei Kuer Environmental Protection Technology Co. LTD**

Address: No. 11, Cuizhu Road, Taohua Town, Feixi County, Hefei, Anhui Province

Website: <https://www.kuerclean.com>

TEL/Whatsapp: 8617352967132

E-mail: info@kuerclean.com

