

Presentation

WINKSTAR ELECTRONIC AND LIGHTING CO., LTD



Presentation Contents



- 01 ABOUT US
- 02 COMPANY OVERVIEW
- 03 AUDIT
- 04 PRODUCT CERTIFICATES
- 05 PRODUCT RANGE

01 ABOUT US

Company Profile:

- The China Factory- Golden Vessel Electronic and Lighting, Inc



01 ABOUT US

Company Profile: Golden Vessel Electronic and Lighting, Inc

- Established in 2008
- Annual Turnover: to nearly 23 million US dollars
- Factory size: The factory currently has 30,000 square meters of land. It has built 4 standardized factory buildings with a total construction area of 25,000 square meters.
- It is an OEM factory for internationally renowned brands such as **Philips** and **GE**.
- Factory System Certification: ISO 9001-2015 , BSCI , SCAN and other Clients requested Audit like GE, THD ...
- Production Certification: CE, UL, CUL, REACH, ROHS
- **The main products:** Festival lights such as, LED Rope light series, LED neo-flex series, LED light string series, LED bulbs, LED motifs, LED App Lights, Bluetooth lights and other decorative lights or Holiday Ornaments.
- Main Customers: Lowe's , The Home Depot, Costco, Menards, J Hoffer

01 ABOUT US

The Cambodia Factory –Winkstar Electronic and lighting Co.,Ltd

- Founded in 2023
- Factory Area: The area of the new company is 22,131 square meters and 2 existing standardized plant. construction area of 12,000 square meters
- Annual Turnover:
 - 2024 from May to Sep testing orders. USD1.5 million
 - 2025 USD 18 million
 - 2026 Plan for USD 25 million
- Factory System Certification: ISO 9001-2015 , Philips RBA , BSCI A Level , SCAN
- Factory Main customers: Target ,Walmart, J.Hoffer

02 COMPANY OVERVIEW

COMPANY OVERVIEW



COMPANY OVERVIEW



COMPANY OVERVIEW



Raw materials warehouse



Semi-Finished products warehouse



Finished products warehouse

COMPANY OVERVIEW



Automatic welding production workshop



Automatic machines
Non-replaceable LED

COMPANY OVERVIEW



2025-6-23

Accessory Workshop

Automatic machines
Replaceable LED

COMPANY OVERVIEW

Packaging & Assemble Workshop



COMPANY OVERVIEW



Injection workshop



Terminal machines

COMPANY OVERVIEW



Sewing Workshop



COMPANY OVERVIEW



Area for twisting
wire



Packaging Workshop

COMPANY OVERVIEW



Sample room



In-house lab

COMPANY OVERVIEW



Loading area



Park area

COMPANY OVERVIEW



Dormitory



Canteen

Staff & Labor

- Managers & supervisors: 20
- QA/QC personnel : 15
- Workers: 500

Monthly Production Capacity

- LED String Light 300K sets, max. 350k sets.
LED model injection light 50k pcs, max. 100k pcs.

Key Products

100% Seasonal

- Christmas
- Halloween
- Spring & Summer
- Valentine's
- National Day
- Easter
- Thanksgiving Day
- St. Patrick's Day
- Mardi Gras

03 AUDIT

ISO 9001 : 2015



PHILIPS RBA –
Overall Score 98



BSCI –LEVEL A



SCAN 97%



04

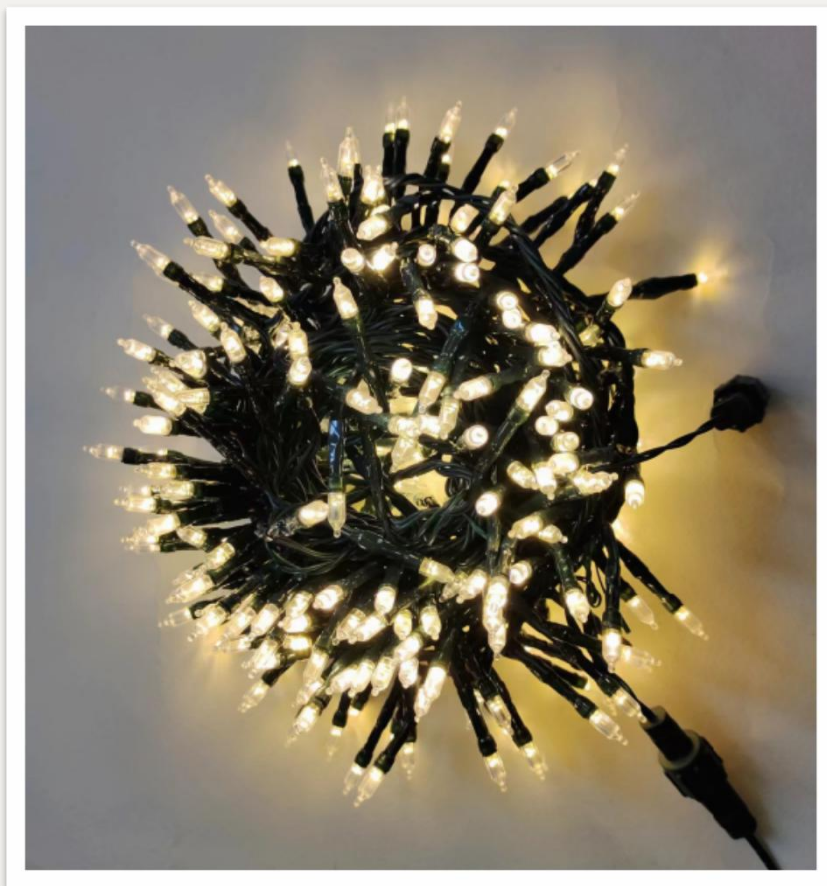
Product Certificates :UL

| E321244 | Lighting string |
|---------|--|
| E322083 | Decorative outfit |
| E523449 | Low voltage Strings, Decorative Lighting |

05

PRODUCT RANGE

String Light







Injection lights IP65



Outdoor Décor

Snowman



GV23-XMS022



GV23-XMS023



GV23-XMS024



5FT Moose



GV23-XMSO18

Polar Bears



GV23-XMSO19



Reindeer and Sleigh



GV23-XMS008



GV23-XMS009



Reindeer Family



GV23-XMS012



GV23-XMS013



Nativity



QV23-XMS039



QV23-XMS040



Twig tree



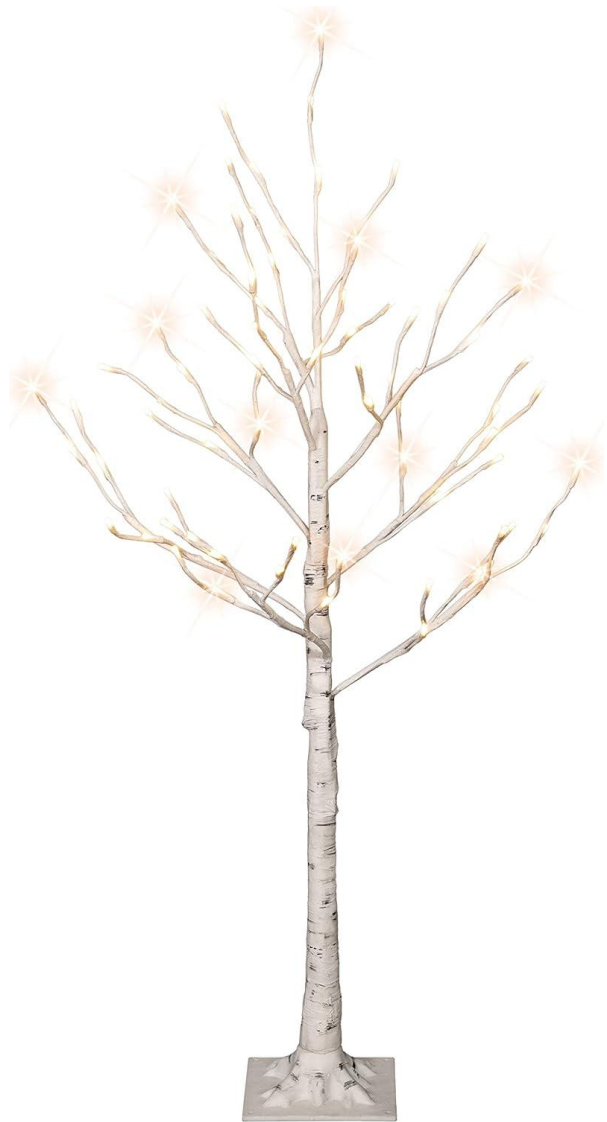
4FT, 6FT



GV23-XMS043



Twig tree



4FT, 6FT, 8FT



GV23-XMS043





26- 001





26- 003





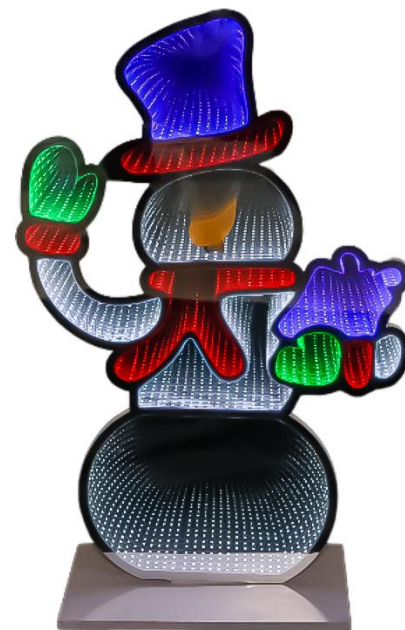
26- 004





26- 007

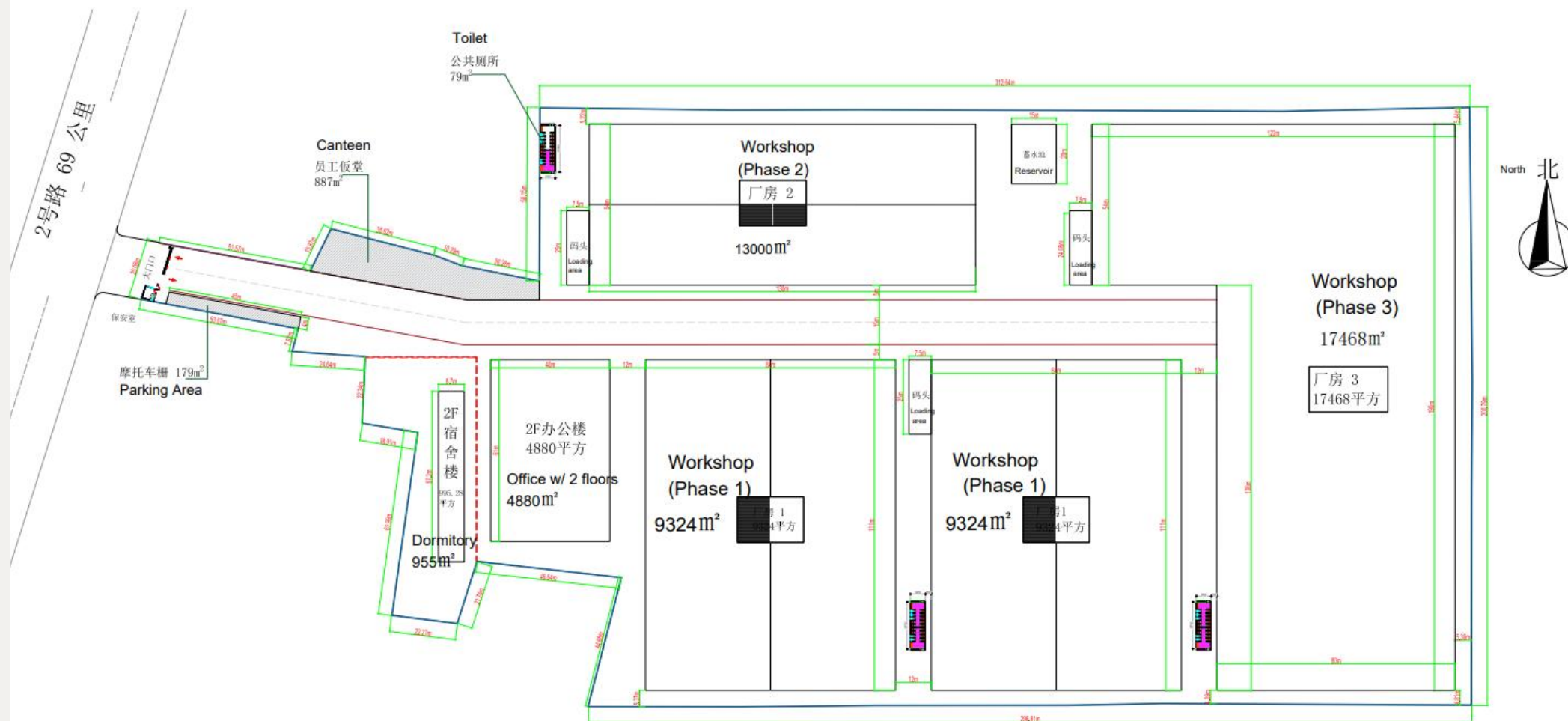






2026

69KM, National Road No. 2



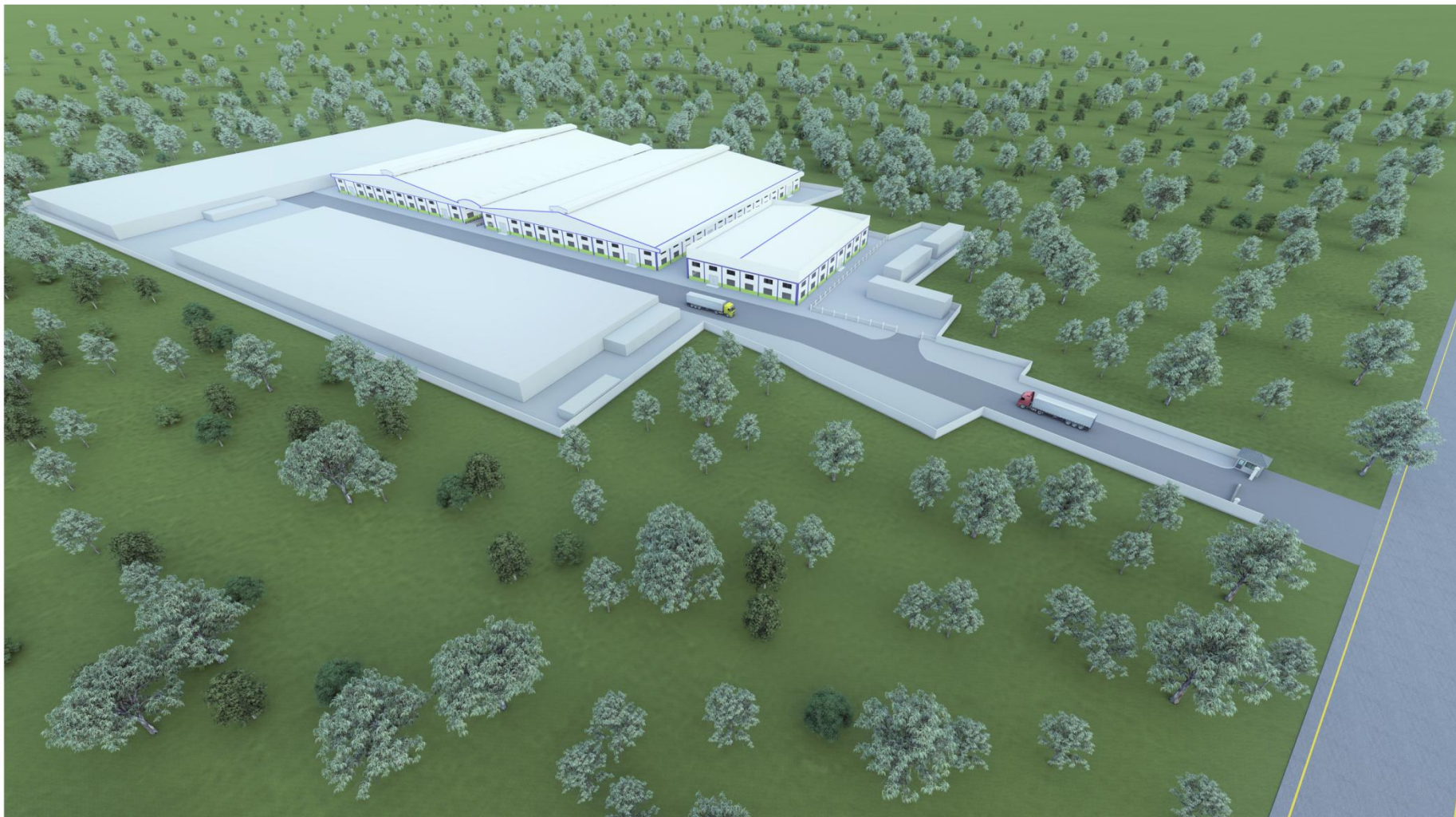
2号路 69 公里

69KM, National Road No. 2

2026



2026



2026



2026



2026



2026



2026



2026



2026



