



**GREAT GRANDE**



GRANDE MODULAR HOUSING (ANHUI) CO., LTD

INNOVATION INCUBATION CENTER Q49, UNIT 1 MENG HE  
ROAD, CHANGFENG COUNTY, HEFEI CITY, CHINA

Website: <https://www.grande-house.com>

**Prefab Modular  
Container house**

# Prefab Modular Foldable Container House Model.GLDZD

## Main features and Advantage

- » **Mobility:** Foldable container houses are designed to be flexible, easily folded and unfolded, making them suitable for temporary or mobile needs such as camping and exhibitions
- » **High Space Efficiency:** These houses maximize space utilization, providing relatively large living space when unfolded, and occupying a smaller volume when folded, creating more functional areas within limited space.
- » **Cost-Effective:** Foldable container houses are often cost-effective, reducing transportation and construction costs. Additionally, their reusability can lead to long-term cost savings.
- » **Quick Assembly:** Compared to traditional buildings, foldable container houses can be assembled more quickly. This is advantageous for emergency situations, temporary use, or rapid construction projects.
- » **Environmentally Friendly:** Manufacturing these houses can involve using recycled shipping containers, reducing the demand for natural resources. Furthermore, their reusability helps minimize overall waste.
- » **Versatility:** The design of foldable container houses allows for customization based on specific needs, making them suitable for various purposes such as residential, office, retail, exhibition, etc.
- » **Durability:** Shipping containers, used as the base material, possess strong structural integrity and durability, resulting in a longer lifespan for foldable container houses.
- » **Modern Aesthetics:** The design of foldable container houses often exudes a modern and innovative aesthetic, appealing to those who appreciate contemporary architectural styles.

It's important to note that foldable container houses may also face challenges such as insulation and soundproofing issues, so a comprehensive evaluation of various factors is necessary for practical applications.

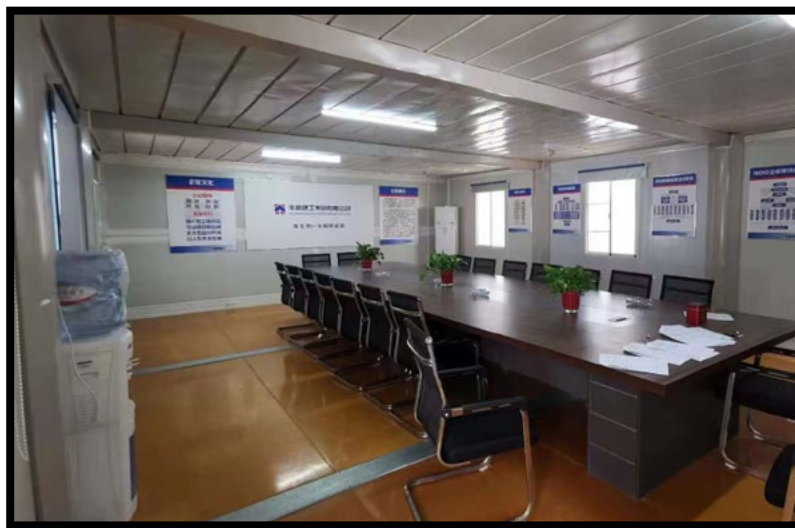
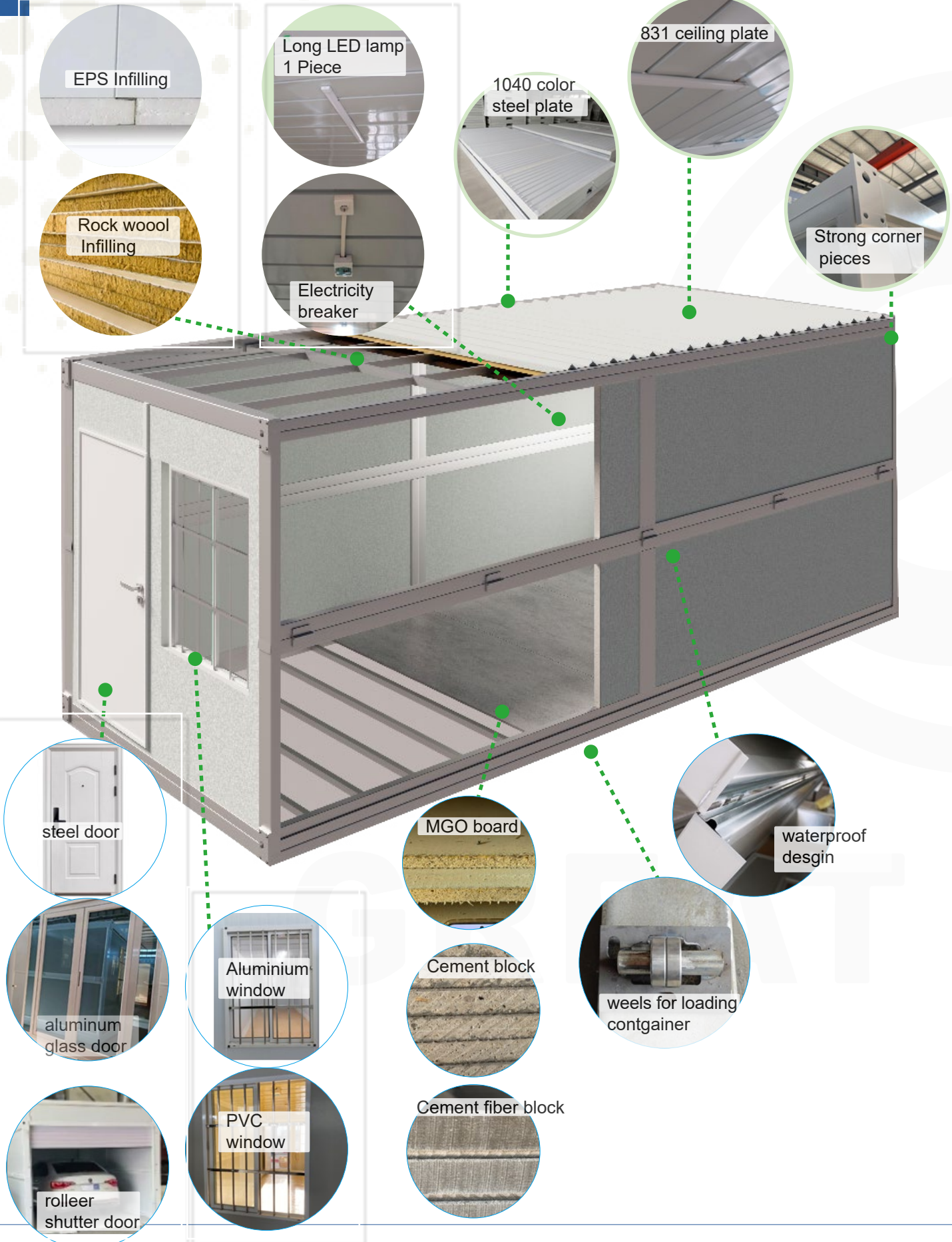
## SPECIFICATION

Measure (20ft)	L5800mm*W2500mm*H2430mm L5800mm*W2500mm*H2390mm L5800mm*W2460mm*H2510mm L5800mm*W2440mm*H2500mm L5800mm*W2480mm*H2560mm
Packing size	L5800mm*W2500mm*H390mm L5800mm*W2500mm*H360mm L5800mm*W2460mm*H320mm L5800mm*W2440mm*H400mm L5800mm*W2480mm*H360mm
Outer roof	Type1040 color steel plate
Inside ceiling	Type 831 ceiling plate
Wall panel	50/65mm EPS/rock wool/glass wool sandwich panel with double-sided 0.28mm steel plate
Steel structure	1.5mm thick steel
Windows	PVC/Aluminum alloy double-layer sliding glass window.Mesh optional
Exterior door	High-end steel security doors/roller shutter door/aluminum glass door
Interior door	Steel/wood
Sub-floor	18mm MGO/Fiber cement block/cement block
Surface floor	Wood/PVC vinyl floor
Bathroom	Integrated with toilet and shower
Water pipe	PPR and PVC water supply and drainage pipe with fittings
Electricity system	Switch,socket,lamp light,waterproof socket,distribution box
Accessories	Paint,glass cement,floor nail,blind rivets etc.
Loading quantity	12 sets/40HQ or 10 sets/40HQ





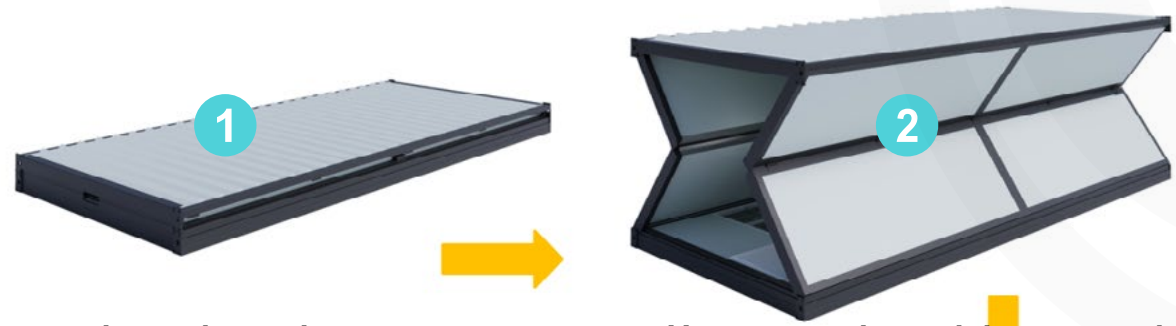
# Configuration and Choices





# 4 Steps 5 Mins a house You can do it !

“ Preparation:  
a crane is needed ”



A crane is need ,use the crane to lift the corner pices

Use a wooden stick wrapped with a soft cloth at both ends, and supported horizontally in the middle position



Check for firmness

then make the front and rear walls stand up

# Inside Display

## Fast & Multi-function



OFFICE, WAREHOUSE, CASUAL WARD, TEMPORARY HOSPITAL, GARAGE, OFFICE, MEETING ROOM, HOTEL, AND MORE...



# Dispaly -Video Installation guide



# Test -Video Test in Lab



Testing Centre of Hefei Institute for Public Safety Research, THU

DETECTING AND ANALYZING REPORT

SAMPLE NAME: Modular Foldable House

ENTRUSTING UNIT: Grande Modular Housing (Anhui) Co., Ltd

DETECTING TYPE: Commission Testing

DETECTING AND ANALYZING UNIT (stamp): Testing Centre of Hefei Institute for Public Safety Research, THU

REPORTING DATE: 2023.11.10

ADDRESS: No. 5999, Xiyao Road, Hefei Economic and Technological Development Zone TEL / FAX: 0551-43621262/0551-43660791

WEBSITE: <http://www.hinghua-hf.edu.cn/> E-Mail: [tsr@hinghua-hf.edu.cn](mailto:tsr@hinghua-hf.edu.cn)

Testing Centre of Hefei Institute for Public Safety Research, THU

Test Report

Test report number: CS-MESL-2023-009 Page 1 of 3

Sample Name	Modular Foldable House	Specification model	L 5.8m × W 2.5m × H 2.43m
Entrusted unit Name	Grande Modular Housing (Anhui) Co., Ltd	Entrusted unit Address	Workshop No.2, Hongyang Logistics Yard, Tushan Street, Gangji Town, Changfeng County, Hefei City, Anhui Province
Testing Device	Climate Wind Tunnel		
Testing Purpose	Compressive Performance	Testing Date	2023.11.3
Sample Status	Intact	Sample Quantity	1
Testing Items and Testing Types	Compressive performance evaluation, 8m³ water tank with a water injection depth of 60cm is placed at the top of the sample		
Testing Results	The sample has been tested, and the results are detailed in the test result summary; no obvious structure damage was observed of the sample.		
Chief Inspector	ZHU Yucheng	SIGN	ZHU Yucheng DATE 2023.11.10
Reviewer	SONG Yuhua	SIGN	SONG Yuhua DATE 2023.11.10
Approver	WU Jintao	SIGN	WU Jintao DATE 2023.11.10



## Flat pack foldable Container House

- » **Convenient Portability and Transportation:** Flat pack container houses can be folded into a smaller volume for easy carrying and transportation. This makes them particularly suitable for hard-to-reach or temporary locations, such as remote areas or disaster-stricken areas
- » **Cost-Efficiency:** Due to their compact nature during manufacturing and transportation, Flat pack foldable container houses tend to have lower associated costs. Additionally, using shipping containers as building materials can reduce construction expenses
- » **Quick Assembly:** Flat pack Foldable container houses are designed to be quickly assembled and disassembled, making them an ideal choice for situations that require rapid construction or relocation
- » **Environmentally Friendly:** Repurposing discarded shipping containers for construction helps reduce the demand for new materials, contributing to resource conservation. Some foldable container houses integrate renewable energy sources and efficient energy systems, enhancing energy efficiency
- » **Flexibility:** These houses can be designed in various shapes and sizes to meet different spatial requirements. They can also be easily modified and expanded, providing greater flexibility
- » **Durability:** Shipping containers are typically made of sturdy steel, offering durability and resistance to harsh weather conditions. This ensures that foldable container houses remain stable in various climates.
- » **Unique Design:** The unique design of Flat pack foldable container houses often attracts attention. Their innovative appearance adds a modern touch, making them suitable for various architectural purposes

It's important to note that Flat pack container house it's better in outer appearance than other foldable container houses ,especially it can be stacked to duplex or 3 stories ,creative design is it's outstanding advantage



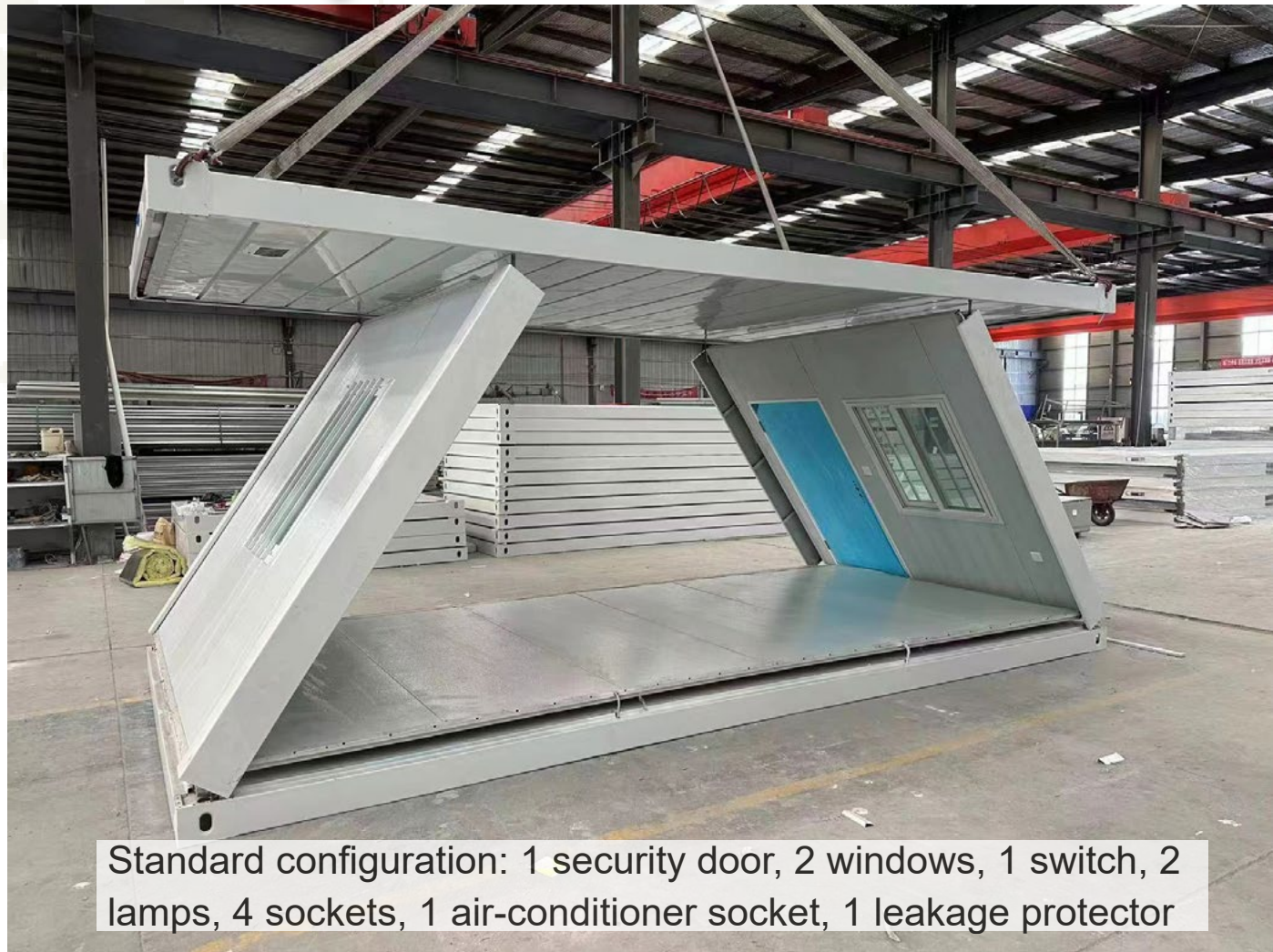
### SPECIFICATION

Measure (20ft)	L6055mm*W2990mm*H2896mm,L5990mm*W2990mm*H2870mm L5900mm*W2438mm*H2890mm,L5800mm*W2438mm*H2530mm
Packing size	L5900mm*W2438mm*H620mm,L5900mm*W2438mm*H520mm L5900mm*W2438mm*H620mm,L5900mm*W2438mm*H520mm
Outer roof	0.4mm thick color steel plate
Inside ceiling	0.3mm Type 831 ceiling plate
Wall panel	75mm EPS /Rock wool insulation 80kg/m <sup>3</sup> sandwiched with 0.25/0.3mm thick steels Orange peel effects
Steel structure	2.3 mm thick steel
Windows	PVC/Aluminum alloy double-layer sliding glass window.Mesh optional
Exterior door	Steel security doors/aluminum glass door
Interior door	Steel door 925*1970mm
Sub-floor	18mm MGO/Fiber cement block/cement block
Surface floor	Wood/PVC vinyl floor
Bathroom	Integrated with toilet and shower
Water pipe	PPR and PVC water supply and drainage pipe with fittings
Electricity system	Switch,socket,lamp light,waterproof socket,distribution box
Accessories	Paint,glass cement,floor nail,blind rivets etc
Loading quantity	8sets / 40HQ(50mm thick wall) and 6 sets / 40HQ(75mm thick wall)





# Model.GLDZDB Z shape Flat pack



Standard configuration: 1 security door, 2 windows, 1 switch, 2 lamps, 4 sockets, 1 air-conditioner socket, 1 leakage protector



# Model.GLDDBX Flat pack

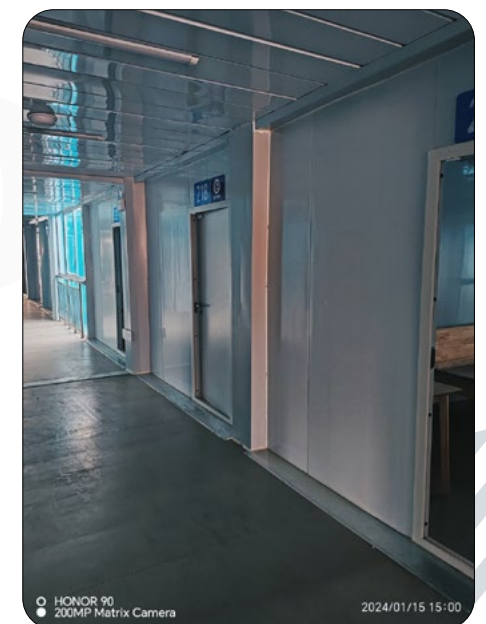
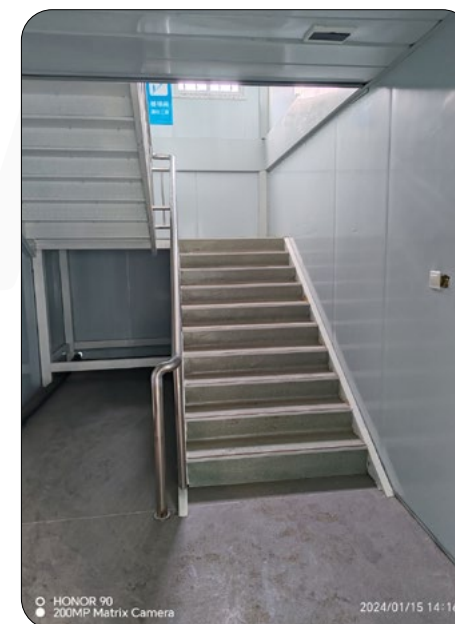
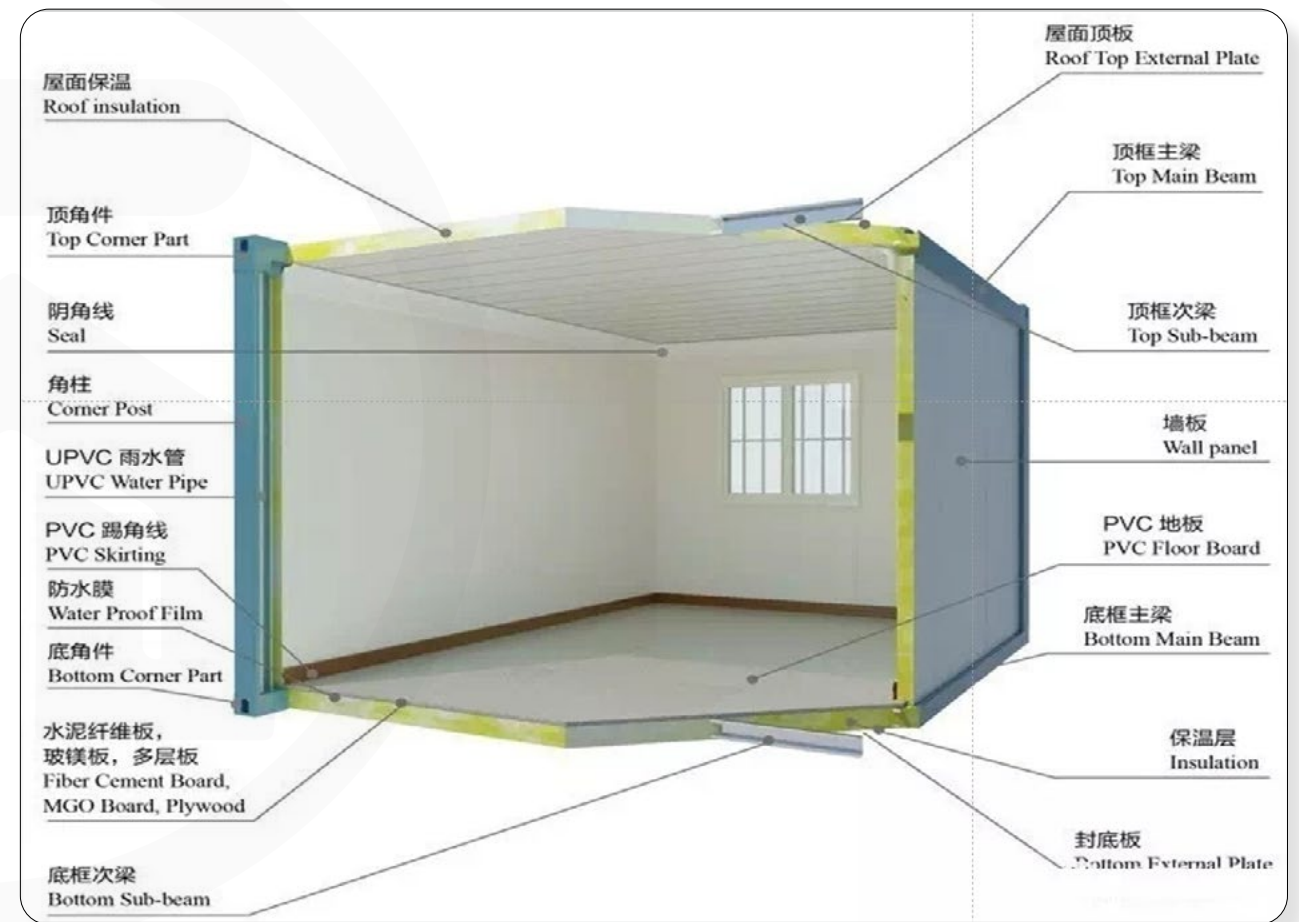




# Display -Video Z shape Installation

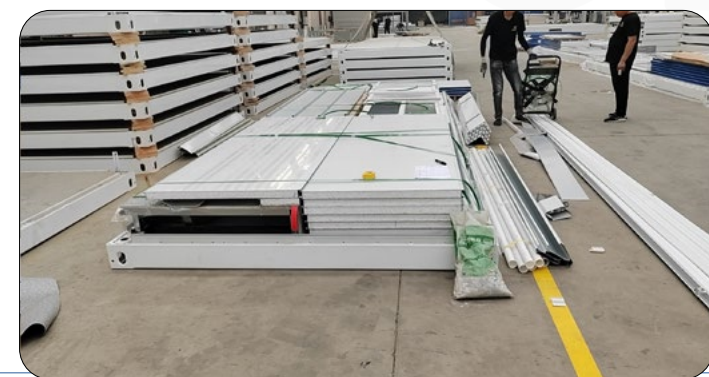


# Structure Strong and Versatility





# Display -Video Flat pack Installation



# Project display

