

GRANDE MODULAR HOUSING (ANHUI) CO., LTD

INNOVATION INCUBATION CENTER Q49, UNIT 1 MENG HE
ROAD, CHANGFENG COUNTY, HEFEI CITY, CHINA

Website: <https://www.grande-house.com>

Expandable
Container house

Expandable Container House Model.GLDTZX

Main features and Advantage

- » Standard modular design ,Easy to install and disassemble, easy to move
- » Fit well into shipping container(40HQ) ,save sea freight
- » No need skilled workers ,just 10 minutes to finish installation
- » Long lifespan : 20-30 years
- » Withstand 8 grade earthquak

Application

- » Disaster Command Center
- » Temporary Medical Station
- » Material Reserve Warehouse
- » Temporary Shelter for Displaced Individuals
- » Villa,office,hotel and dormitory ,customized home



SPECIFICATION

Measure (10ft/20ft/30ft/40ft)	(10ft) :L2950 mm*W6300 mm*H2480 mm , L2950mm*W6420mm*H2450mm (20ft):L5900 mm*W6300 mm*H2480 mm , L5900mm*W6420mm*H2450mm (30ft):L9000 mm*W6220 mm*H2480 mm , L9000mm*W6420mm*H2450mm (40ft):L11800 mm*W6300 mm*H2480 mm , L11800mm*W6420mm*H2450mm (700series) :L5900mm*W4800mm*H2480mm
Packing size	(10ft) :L2950 mm*W2200 mm*H2480 mm , L2950mm*W2250mm*H2450mm (20ft):L5900 mm*W2200 mm*H2480 mm , L5900mm*W2250mm*H2450mm (30ft):L9000 mm*W2200 mm*H2480 mm , L9000mm*W2250mm*H2450mm (40ft):L11800 mm*W2200 mm*H2480 mm , L11800mm*W2250mm*H2450mm (700series) :L5900mm*W700mm*H2480mm
Wall panel	50/75/100mm EPS/rock wool/PU/glass wool sandwich panel with double-sided 0.4mm steel plate
Steel structure	2.5-3.0mm welding steel structure
Windows	PVC/Aluminium alloy double-layer sliding glass window.Mesh optional
Exterior door	KFC door/Aluminium thermal break double glazed door /Titanium alloys door/Steel door
Interior door	Steel/wood
Sub-floor	18mm MGO/Fiber cement board
Surface floor	Wood/PVC vinyl floor
Bathroom	1) Fan shaped integrated with toilet and shower 2) Dry and wet separation:Shower,seated toilet,wash basin,dresser mirror
Kitchen	Sink with cupboard,stainless steel double sink,tap (Straight shape/L-shape)
Inside wall decoration	UV board for kitchen and bathroom,Bamboo wood fiber board for bedrooms and living room
Outside wall decoration	Metal carved metal plate
Water pipe	PPR and PVC water supply and drainage pipe with fittings
Electricity system	Switch,socket,lamp light,waterproof socket,distribution box
Accessories	Paint,glass cement,floor nail,blind rivets etc.
Loading qty	10ft :4sets/40HQ, 20ft :2sets/40HQ,30ft:1 set/40HQ,40ft:1set/40HQ,700series:6sets/40HQ



Configuration and Choices

Electricity system

Aluminum double glazed 5+9a+5

PVC window Single glazed

KFC door

Aluminum Thermal break double glazed 5+9a+5

Steel door

Hinges

Metal caved panel

Corner Pieces

PVC floor

Wood floor

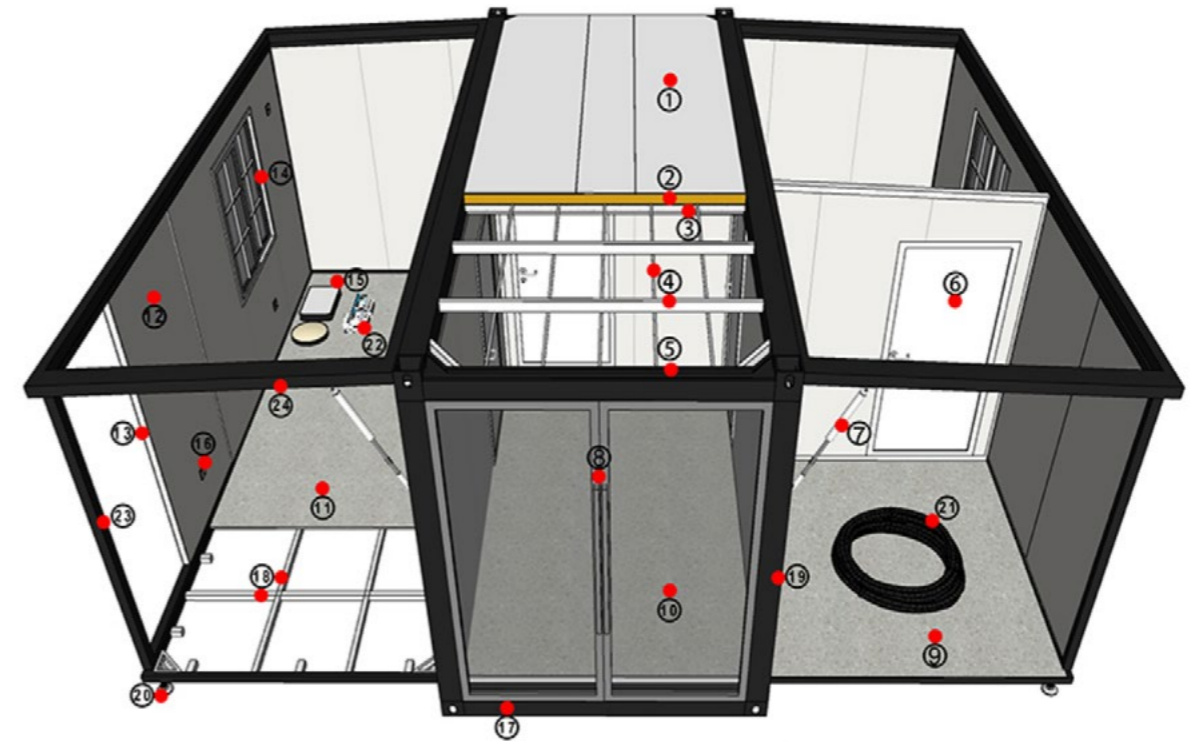
Infilling EPS/Rock wool

Closed

Electricity input connector

Drainage pipe Cold and hot water inlet

Structure Exploure



- 01. Skinned roof
- 02. EPS/Rock wool insulation
- 03. Foam insulation
- 04. Roof sub-beam
- 05. Roof main beam
- 06. Inside house door
- 07. Support frame
- 08. Main entrance doors
- 09. PVC /Wood Floor
- 10. MGO Flooring
- 11. OSB Board
- 12. Color steel wall
- 13. Foams wall filling
- 14. Window
- 15. LED ceiling lights
- 16. Socket
- 17. Bottom main beam
- 18. Bottom sub-beam
- 19. Pillar
- 20. Support pillar
- 21. Electric circuit
- 22. Power Breaker
- 23. Side strut
- 24. Side top beam

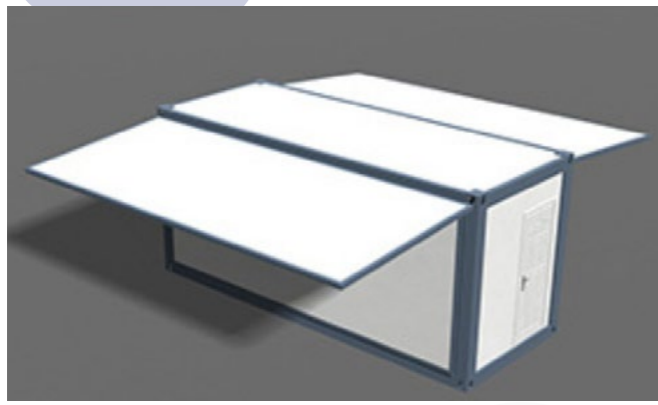
4 Steps

10 Mins

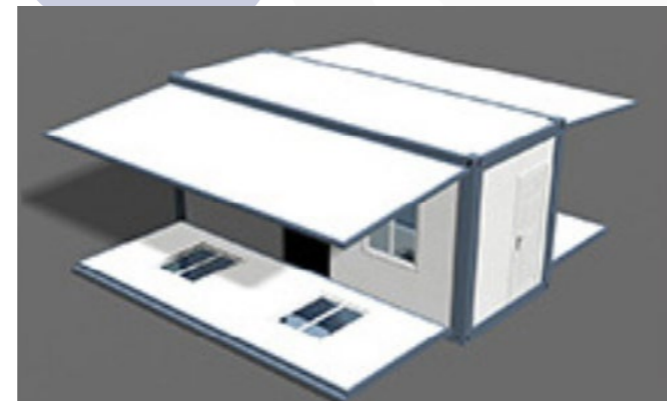
Ready the house



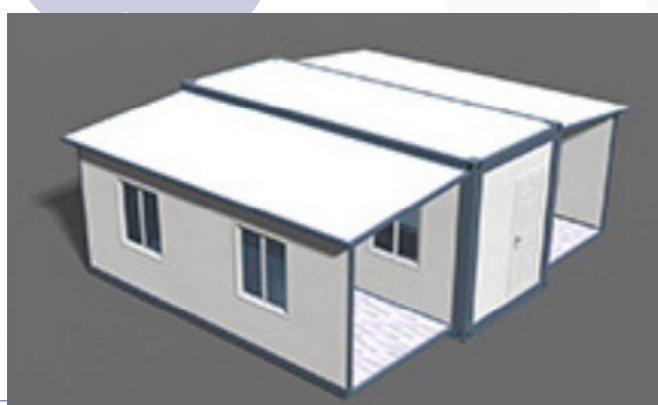
Setp 1 Open two roofs



Setp 2 Floor installation



Setp 3 Open walls



Setp 4 Open Front wall



Classic Layout 1

1 Bedroom 1 bathroom 1 Kitchen



We recommend this design for 20 ft container house

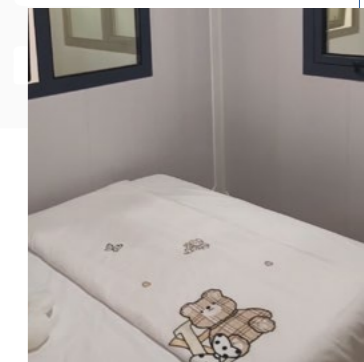
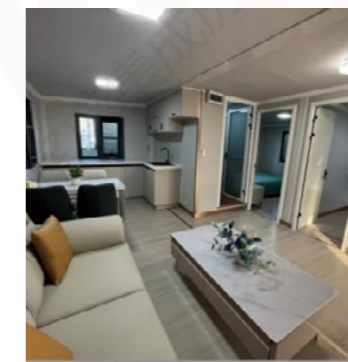
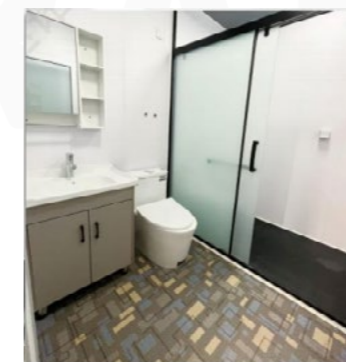
07 Classic Layout 2

2 Bedroom 1 bathroom 1 Kitchen



08 Classic Layout 3

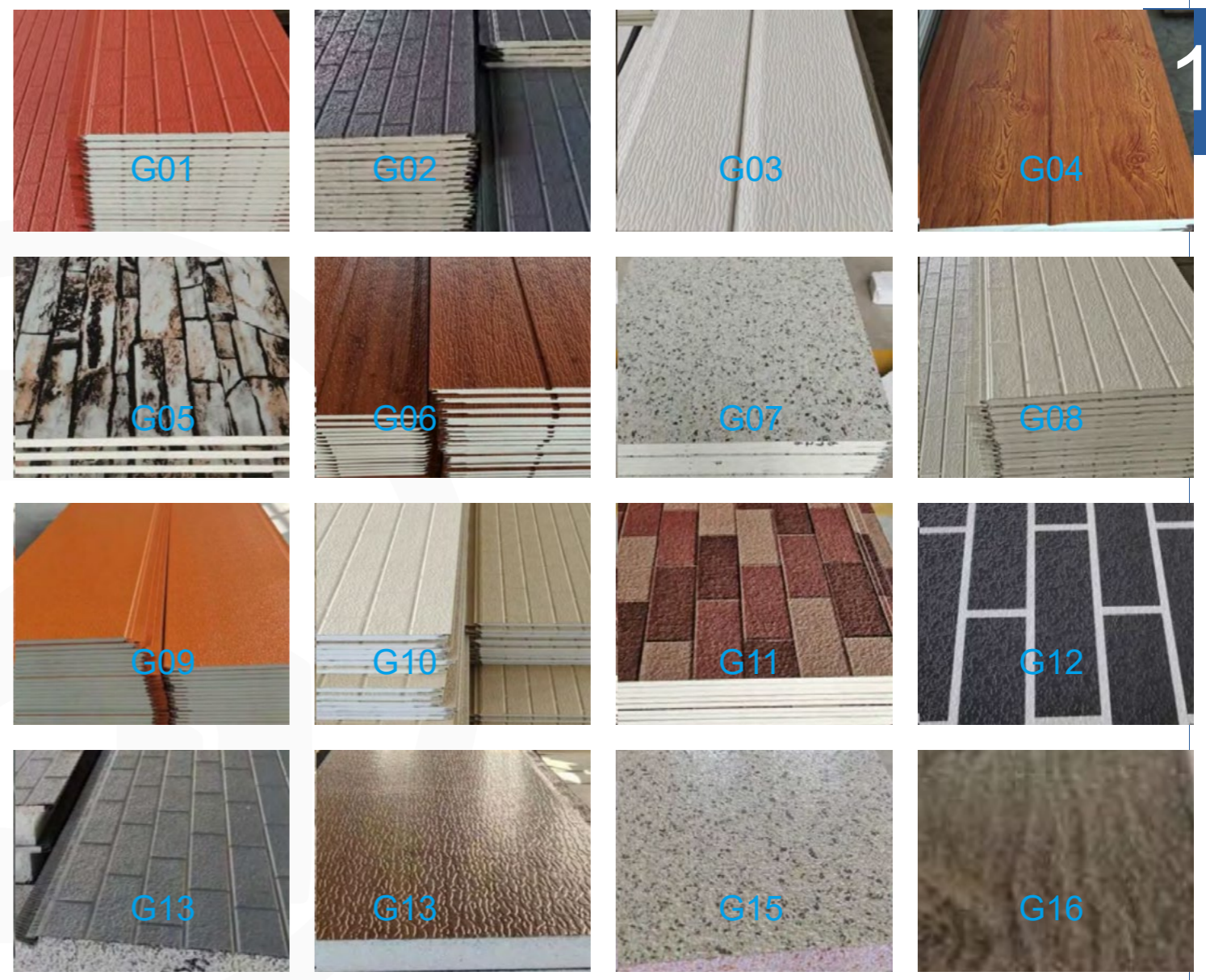
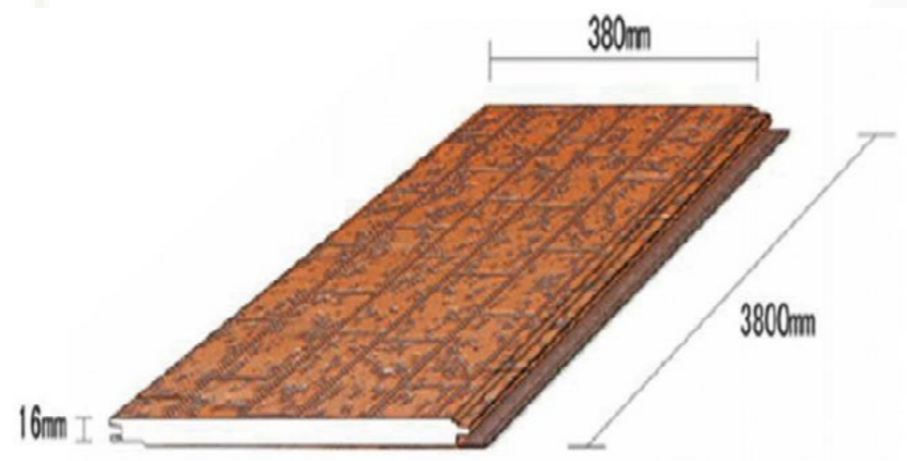
2 Bedroom 1 bathroom 1 Kitchen



We recommend this design for 20 ft or 30ft container house

We recommend this design for 40ft container house

EXTERIOR PU +METAL CARVED DECORATIVE PLATE

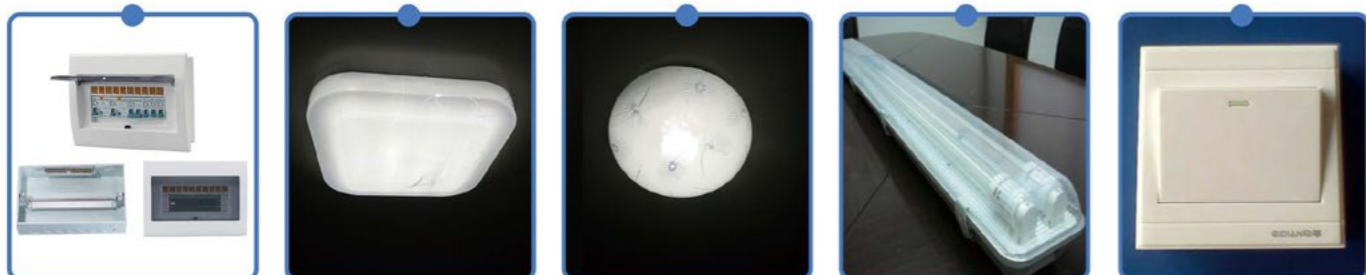


TESTING REPORT OF PHYSICAL PERFORMANCE

Testing Item	Technical requirement	Testing result	Testing method
Thermal conductivity (core material)W/(m*k)	≤0.025	0.025	GBT10295-1988
compressive strength,kPa	2120	29	GBT8813-1988
water absorption,%	≤5	8	GB/T8810-2005
density of the panel(three layers),kg/m2	≥3.5	3.78	GBT6343-1995
bending resistance under 0.5KN,mm	≤18.3	13.3	GB/T9341-2000
cementation strength,Mpa	≥0.10	0.238	JCT868-2000
smog resistance(h)	≥1000h	color is not changed and no spot of erosion	QBT3826-1999
weather resistance(h)	≥1000h	There is no damage on the surface and color ehanges from lever 4-5	GBT16442.2-1999



ACCESSORIES



NAILS BOLTS SERIES



Videos for more info

INSTALLATION

<https://youtu.be/mn4RTsOVI6s>



SCENARIO EXAMPLE

